

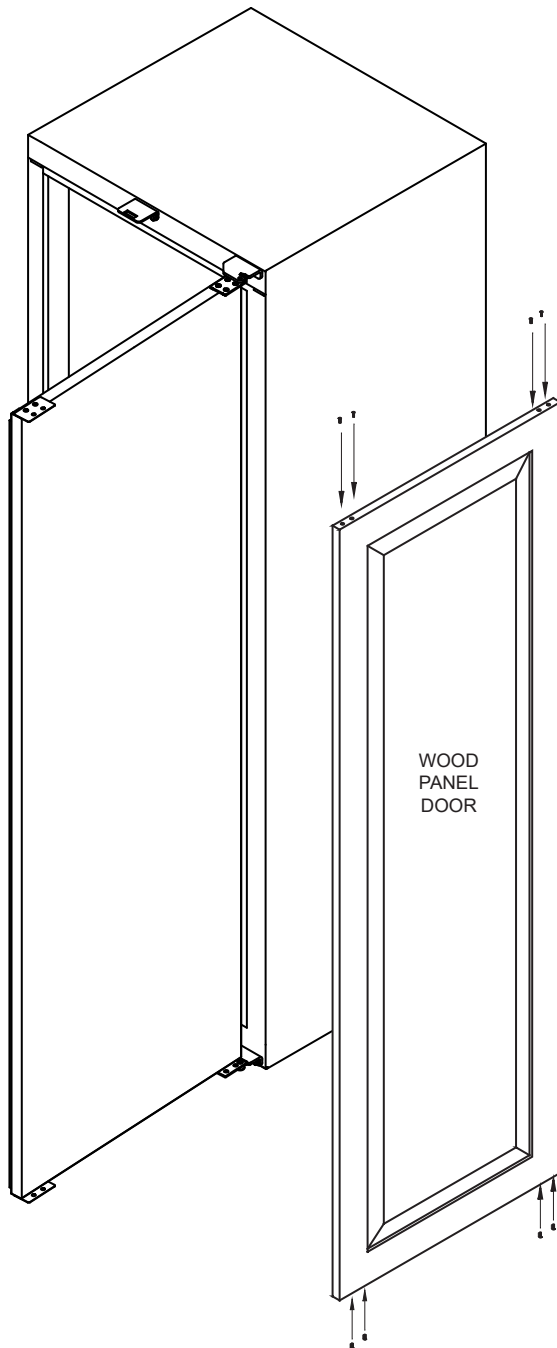
Project: _____	AIA# _____
Item #: _____ Qty: _____	SIS# _____
Model #: _____	

Wood Panel High Profile Cooler Details

Glastender high profile models can be supplied with hardware to accommodate 3/4" thick wood panels attached to the front of the standard black vinyl-clad doors and refrigeration compartment.

The specification when ordering must call out for hinge hardware to accommodate field installed wood panels by others.

The dimensional details for fabrication of the wood panels are illustrated in the detail to the left with the width and height dimensions listed on the following pages.



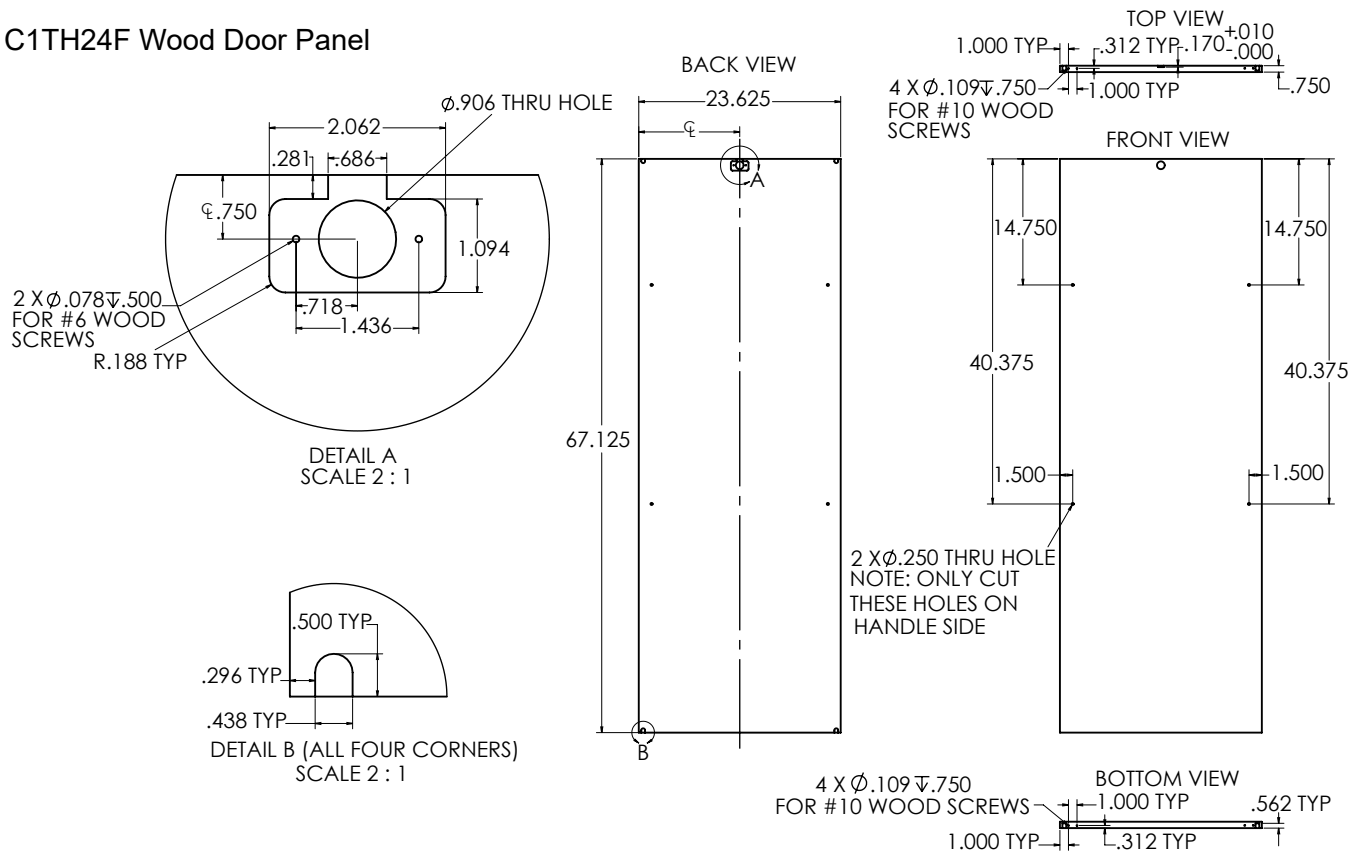
Wood Panel Door Mounting Instructions

1. Remove the black vinyl-clad door from the cooler by removing the screws from the top hinge. The door can then tilt out from under the hinge and be lifted up off the bottom hinge bracket. Retain the plastic spacer washers.
2. Secure the top hinge back in place.
3. Lay the black vinyl-clad door down face up and position the wood panel on top of it. No sealant or glue is required between the black vinyl-clad door and the wood panel.
4. Align the wood panel accordingly, then pre-drill starter holes in the wood panel through the upper and lower wood panel mounting plates already attached to the black vinyl-clad door. The top and bottom hinge also function as wood panel mounting plates.
5. Mount the wood panel with screws through all of the wood panel mounting plates except the top hinge. The handle must be mounted at this time as well.
6. Remove the top hinge from the black vinyl-clad door and set the bottom hinge pin into the bottom hinge bracket. Be sure to use the plastic spacer washers provided for the upper and lower hinge pins.
7. Place the top hinge on the top hinge bracket pin and then position the door beneath the hinge to align with mounting holes.
8. Fasten the top hinge to the black vinyl-clad door and the wood panel and the installation is complete.

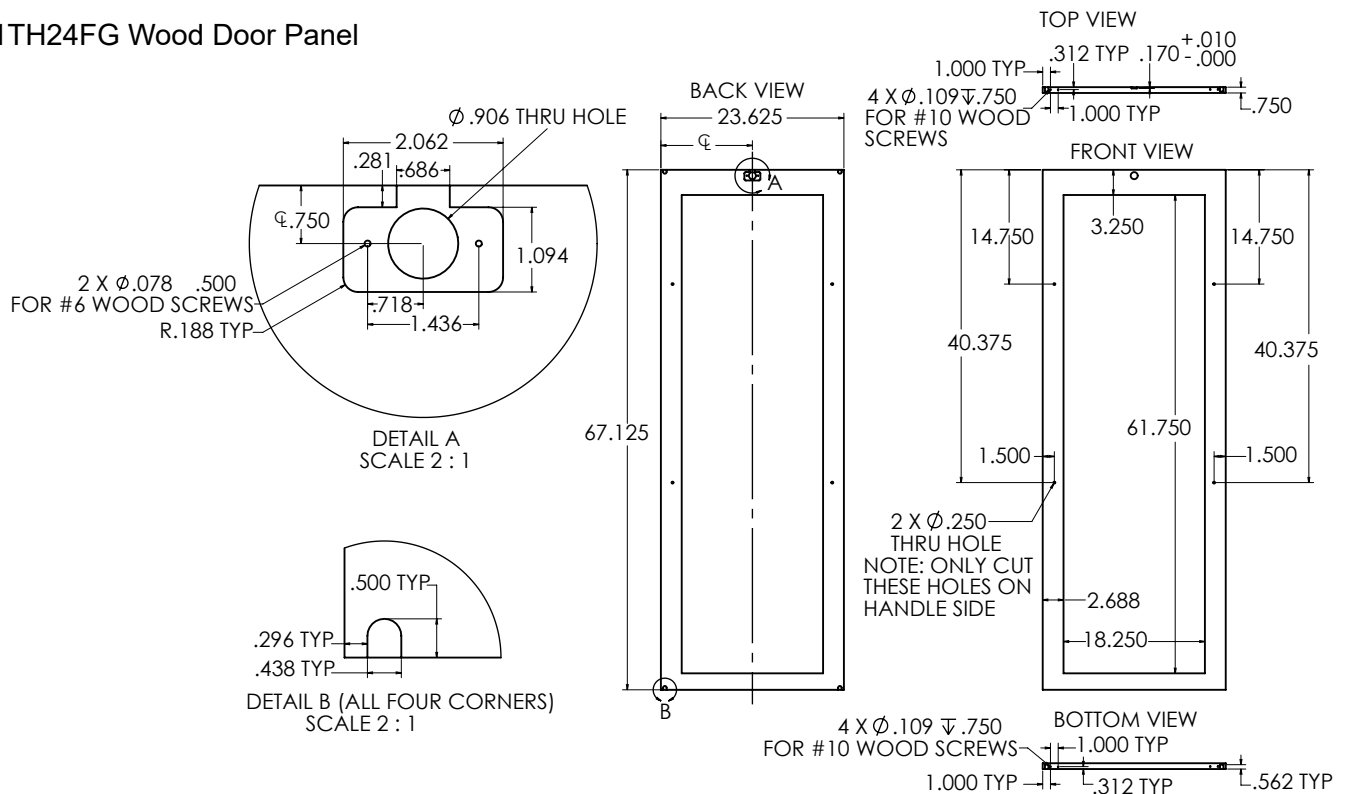
Wood Panel High Profile Cooler Details

Wood Panel High Profile Full Height Cooler Door Dimensions

C1TH24F Wood Door Panel



C1TH24FG Wood Door Panel



5400 N Michigan Rd • Saginaw, MI • 48604-9780
989.752.4275 • 800.748.0423 • Fax 989.752.4444
www.glastender.com

Printed in USA

Wood Panel High Profile Half Height Cooler Door Dimensions

Technical drawing of Detail A, a cross-section of a mechanical part. The part is a semi-circular plate with a central circular hole. Dimensions include:

- Top hole diameter: $\phi .078 \nabla .500$ TYP FOR #6 WOOD SCREW
- Top hole center-to-center distance: .686
- Top hole center-to-right edge distance: .281
- Top hole diameter: $\phi .875$ THRU HOLE
- Top hole center-to-left edge distance: $\phi .750$
- Top hole center-to-right edge distance: 1.094
- Top hole center-to-bottom edge distance: .718
- Top hole center-to-right edge distance: 1.436
- Top hole center-to-bottom edge distance: 2.062
- Top hole center-to-left edge distance: R.188

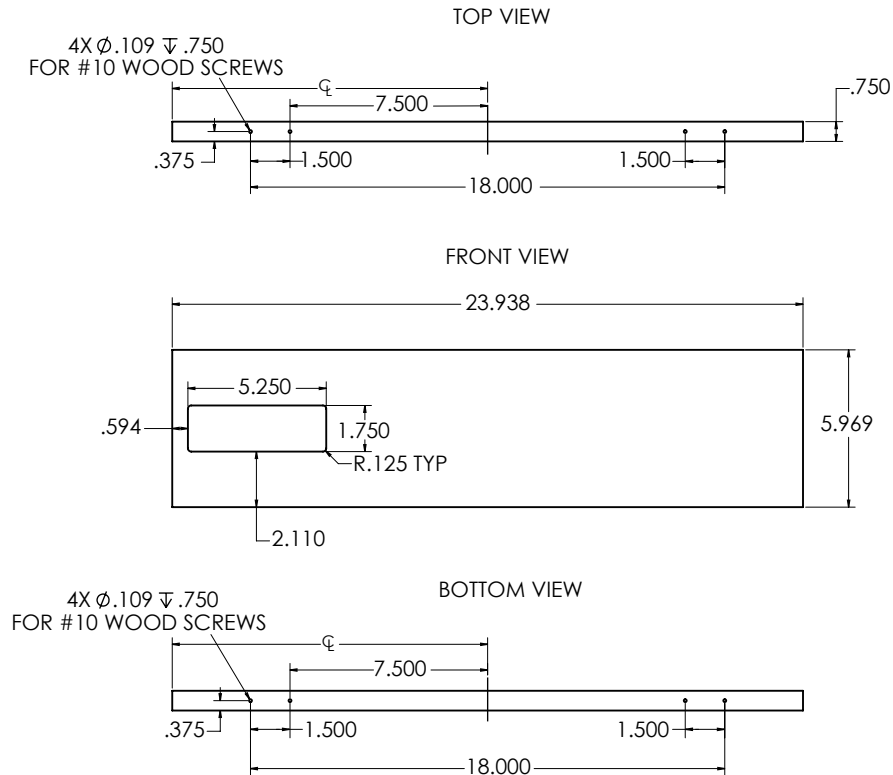
DETAIL A
SCALE 2 : 1

Bottom view of the part. The drawing shows a rectangular plate with a width of 1.000 TYP and a length of 1.000 TYP. A hole is located at the top center, with a diameter of $\varnothing .109 \pm .0075$ TYP. The hole is for a #10 wood screw. The distance from the right edge of the plate to the center of the hole is .312. The text "BOTTOM VIEW" is written below the plate.

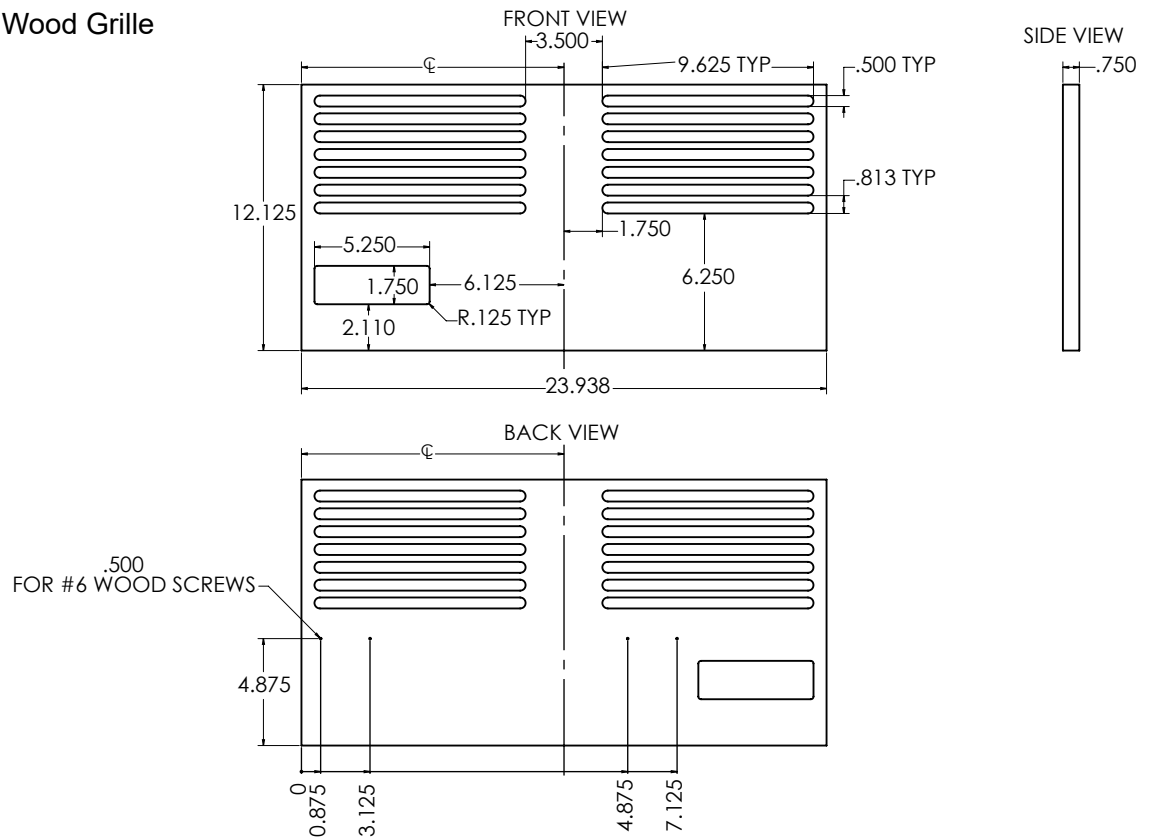
Wood Panel High Profile Cooler Details

Wood Panel High Profile Cooler Compressor Component Dimensions

C1TH24 Wood Grille



C1TH24 Built-In Wood Grille

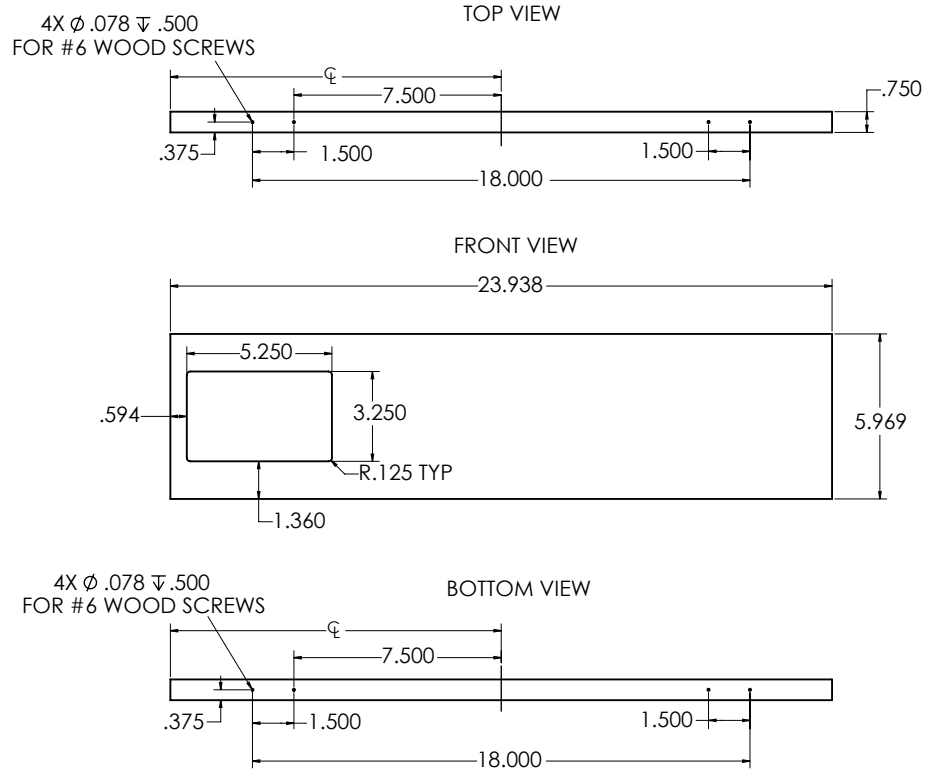


5400 N Michigan Rd • Saginaw, MI • 48604-9780
989.752.4275 • 800.748.0423 • Fax 989.752.4444
www.glastender.com

Wood Panel High Profile Cooler Details

Wood Panel High Profile Cooler Compressor Component Dimensions

C2TH24 Wood Grille



C2TH24 Built-In Wood Grille

