

Unit Information

1 HP peak – 1.0 Amps
 Designed to Operate with
 Rolled-top Milk Shake Containers.
 High-Low Speed Toggle Switch
 on Motor Housing.
 On-Off Actuator Knob Switch
 on Unit Body.



013304
 NSF Seal

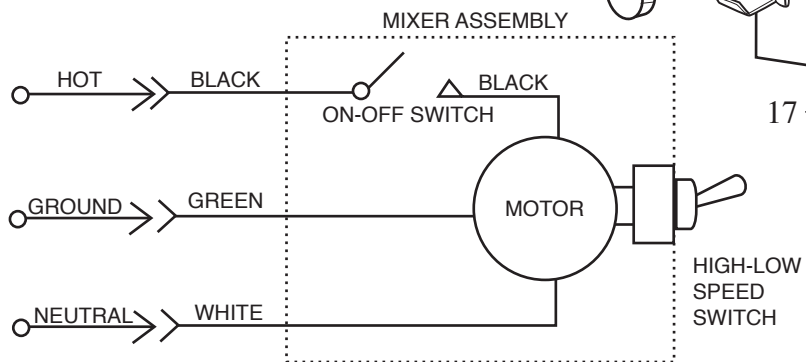
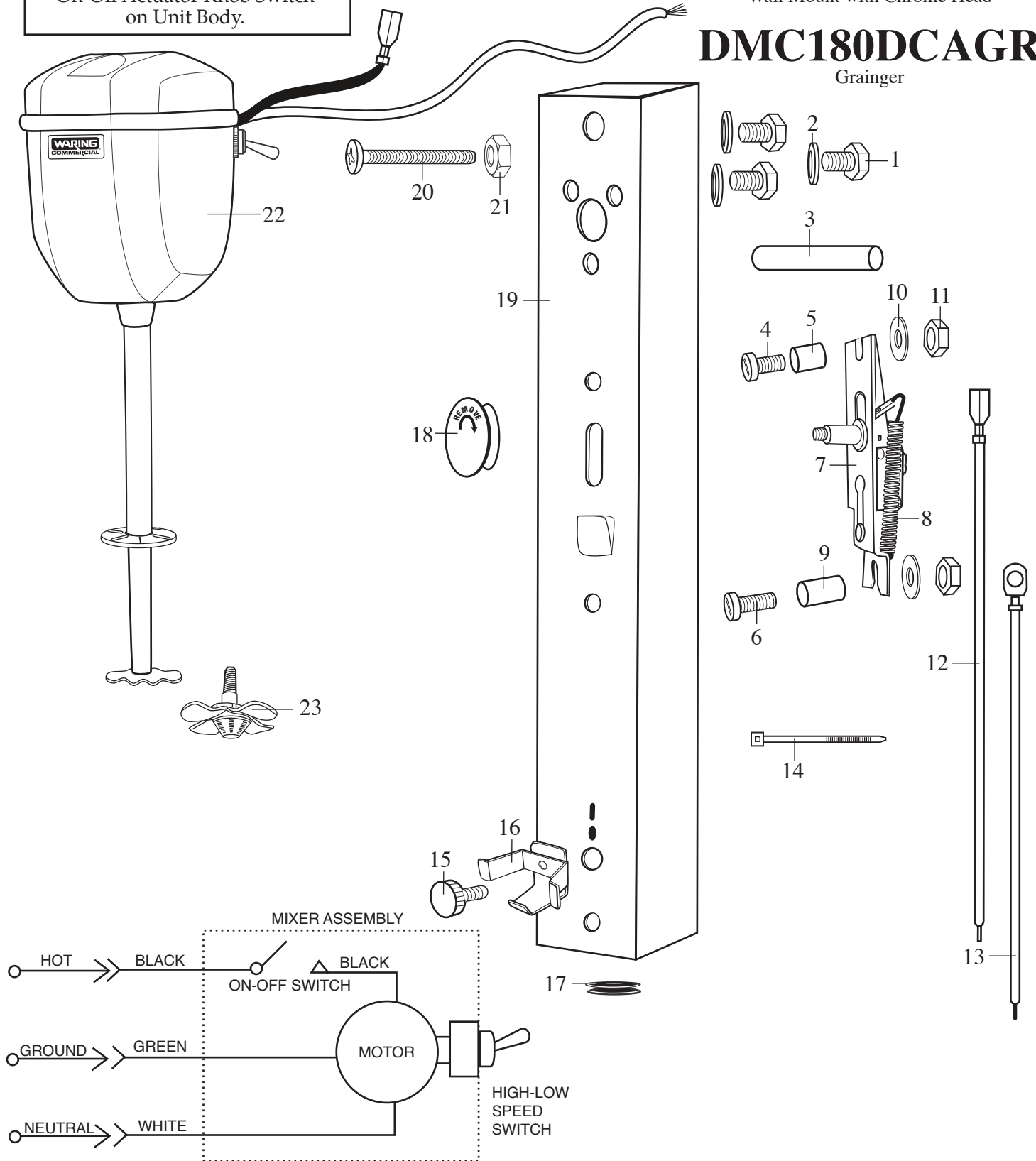
WARING COMMERCIAL

DMC180DCA

Wall Mount with Chrome Head

DMC180DCAGR

Grainger



Catalog/Model

DMC180DCA
DMC180DCAG

Waring Factory Service Center
314 Ella T. Grasso Ave.
Torrington, CT 06790
Tele. 1-800-269-6640
Fax 860-496-9017
www.waringproducts.com

Illustration#	Part#	Description
1	032418	Bolt 3 Req.'d
2	029273	Washer 3 Req.'d
3	032419	Sleeve
4	032420	Screw
5	016182	Spacer /short
6	016179	Screw
7	030318	Switch
8	029275	Return Switch Spring
9	016181	Spacer /long
10	032421	Washer 2 Req.'d
11	032422	Hex Nut 2 Req.'d
12	032423	Lead /black
13	032424	Lead /green
14	013731	Wire Tie 2 Req.'d
15	013918	Container Support Screw
16	015551	Container Support
17	032425	Lead Protector
18	030319	Knob /black screw on
19	501496	Body
20	016183 027399	Screw 2 Req.'d /DMC180DCA Screw 2 Req.'d /DMC180DCAG
21	016189	Hex Nut 2 Req.'d
22	029289	Motor (head) /chrome <i>(comes with 029290 disk agitator & 029291 screw)</i>
23	029292	Agitator /butterfly