

Yamato



Digital Portion Scale AW-WLG Series SERVICE MANUAL

PLEASE TAKE THE TIME TO READ THESE INSTRUCTIONS BEFORE
STARTING TO USE THE SCALES

TABLE OF CONTENTS

SPECIFICATIONS	2
OVERLAY	3
LCD DISPLAY	3
KEY FUNCTION DESCRIPTION:	4
USING AUTO TIME-OFF SETTING.....	5
CALIBRATION PROCEDURE	6
INSTRUCTION AUTO SHUT-OFF FUNCTION	7
POWER SUPPLY	8
INSTALLING THE BATTERY	8
CONTROL PANEL	9
LCD FORMAT	10
PART LISTS & ASSEMBLY DRAWING	11
TROUBLE SHOOTING	12
ERROR MESSAGE.....	13

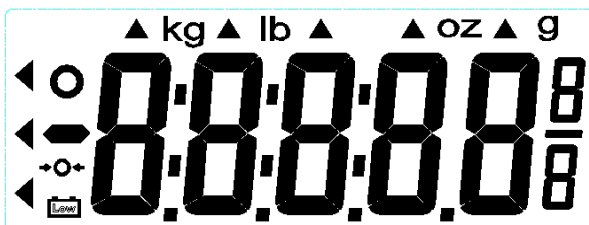
SPECIFICATIONS

MODEL#	AW-WLG15	AW-WLG30
Capacity	0-6 kg x 0.002 kg	0-15 kg x 0.005 kg
Division	5-15 kg x 0.005 kg	15-30 kg x 0.01 kg
Units of Measure	kg, lb	
Function keys	ON/OFF, HOLD, UNIT, TARE/BACKLIGHT	
Stabilisation Time	1-2 seconds	
Operating Temp. and humidity	5°C - 35°C 40%-95% RH	
Transport and storage temperature and humidity	-20°C +60°C 25%-95% RH	
Power supply	4 x AA size Alkaline cells	
	120 VAC 60Hz to 15 VDC 300 mA wall plug-in UL/CSA listed power supply	
Indicator display	1.0 inch backlit LCD, 5 Digit with fraction	
Dimensions	11.22" W x 10.03" D x 3.54" H (285mm x 255mm x 90mm)	
Platform Size	9.44" W x 7.28" D (240mm x 185mm)	

OVERLAY



LCD DISPLAY



1. ○ : Stable symbol
2. ■ : Minor weight value
3. → ○ ← : Indicates scale is at center of zero
4. 🔋 : Low battery indication

KEY FUNCTION DESCRIPTION:

1. ON/OFF:

1. Turn on the scale by pressing the **ON/OFF** key.
2. The display will count down from 88888 and will automatically display zero (weighing mode).
3. Place the item in the middle of the scale. Wait until the scale stabilizes and stable enunciator illuminates on the display.

2. UNIT:

Press the UNIT key to switch from one weighing unit to another.
For example from kg to lb, oz, lb/oz, lb/oz 1/8.

3. HOLD

- a. Press once to hold the displayed weight.
- b. Press again to return display to normal weighing mode.

4. TARE:

- a. Press to reset the display to zero up to 100% of the scale capacity.
- b. Press to confirm the setting for each menu.
- c. Setting backlight function ON or OFF.

5. UNIT:

- a. Press to change the weighing units to the alternate units of measurement (if selected during configuration of the scale).
- b. Press 6 times while holding **ON/OFF** key to enter Configuration mode.
- c. Press to select menu in the Configuration mode.

USING AUTO TIME-OFF SETTING

Switch ON the scale and long press UNIT key for 3 seconds, first "SETUP" and then "A.OFF" will display successively.

AUTO-OFF TIME SETUP

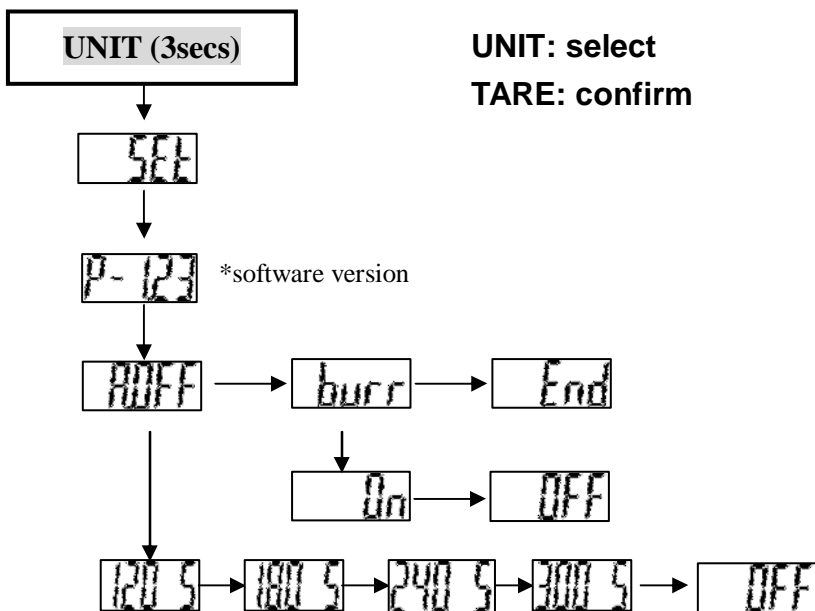
This enables operator to select the auto turn OFF time of the device.

Auto off time: 120 sec/180 sec/240 sec/300 sec/off

BUZZER ON/OFF SETUP

This enables operator to select beep sound ON/OFF.

Buzzer: On/Off


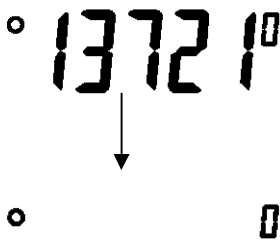






UNIT: select
TARE: confirm

Note: To confirm the settings, please press TARE when

End displays on the display.

CALIBRATION PROCEDURE

Operation	Display
1. Place the scale on a hard, level surface. 2. Don't press ON/OFF key,	
3. Press and hold ON/OFF, and then press UNIT key three times. To enter into calibration procedure. 4. Display will show the zero value. 5. Then press the  key.	
6. Place the calibration weight (10kg) carefully in the centre of the scale plate, and the display will show SPAN Count value (4000-80000). 7. Press the  key. The adjustment process is started.	
8. When the adjustment is finished successfully, the scale is automatically switched over to the weighing mode again and the calibration weight value will be displayed.	
9. Remove the calibration weight. Re-power on, the instrument is in normal mode.	

INSTRUCTION AUTO SHUT-OFF FUNCTION

Press UNIT
key 3 sec



Select



SEL



Define



AOFF



burr



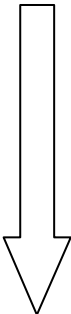
End



On



OFF



1205

1805

2405

3005

OFF



POWER SUPPLY

To apply power to the scale using the supplied 15VDC, 300 mA power supply, insert the plug from the power supply cable into the power jack on the back of the scale and then plug power supply into the proper electrical outlet. The scale is now ready for operation.

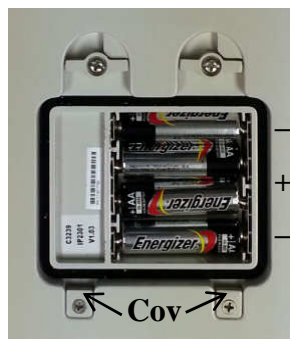
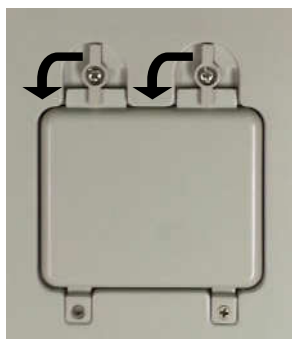


INSTALLING THE BATTERY

The scale can use four (4) AA size batteries (not included). If you wish to operate the scale from batteries, you must first obtain and install the batteries. Access is via a removable cover on the bottom of the scale.

Battery Installation/Replacement

1. Turn scale over so that display is facing down and place it upside down on a flat level surface, such as a table or bench.
2. Locate battery cover on bottom of scale and turn locking tabs counterclockwise.



3. Remove battery cover (lift straight up and slide it out) exposing battery holder.
4. If installing new batteries, proceed to step 5. If replacing batteries,

- remove all 4 batteries from battery holder and then proceed to step 5.
5. Install 4 new "AA" size batteries in battery holder, noting polarity markings as shown above.
 6. After placing all 4 batteries in holder, replace battery cover on scale. Slide tabs on battery cover into slots at back of opening, press down on cover and turn locking tabs clockwise.
 7. Turn scale over (display facing up) and press **ON/OFF** key.

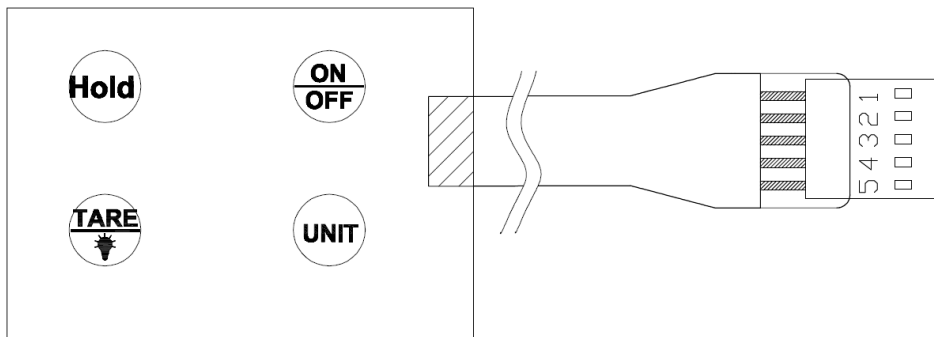
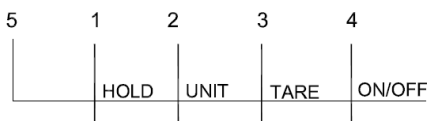
**If display turns on, batteries have been installed correctly.
If not, remove battery cover and check for one or more improperly positioned batteries.**

CONTROL PANEL

When control panel switch damaged. Using multi-meter to measure voltage of control panel. Reconnect control panel. Make sure that control panel is connected to the correct housing.

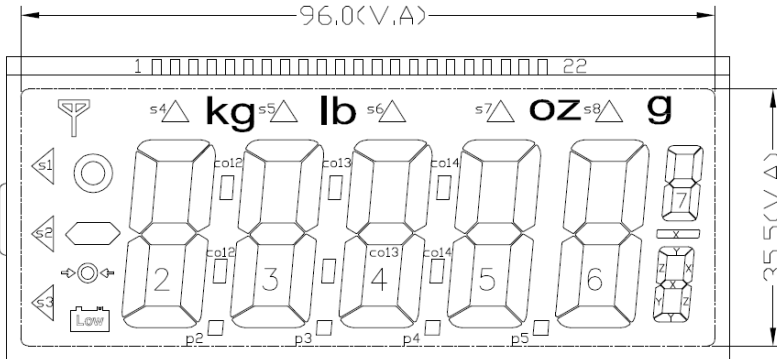
If problem persists, replace a new control panel.

PIN Assignment



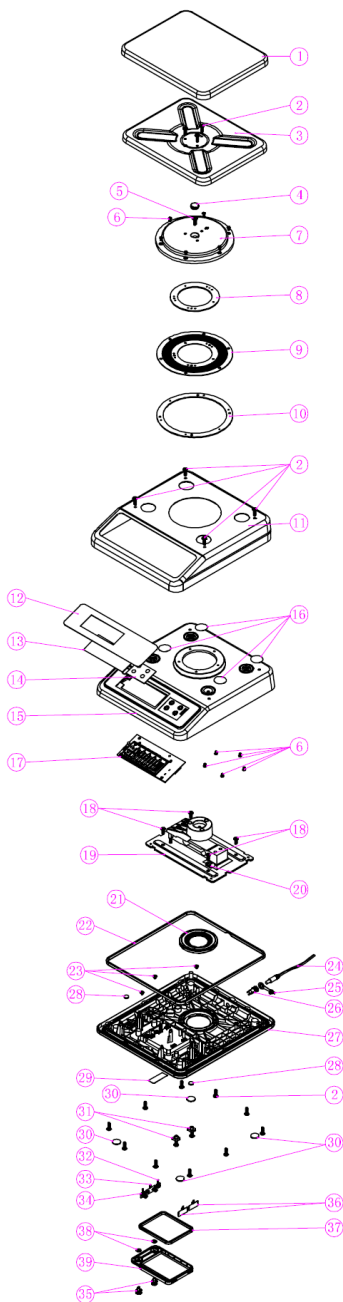
LCD FORMAT

When power on, the scale shows non-complete segments. Please check the LCD pin (please refer to above LCD format). Check whether LCD pins are soldered properly or not.



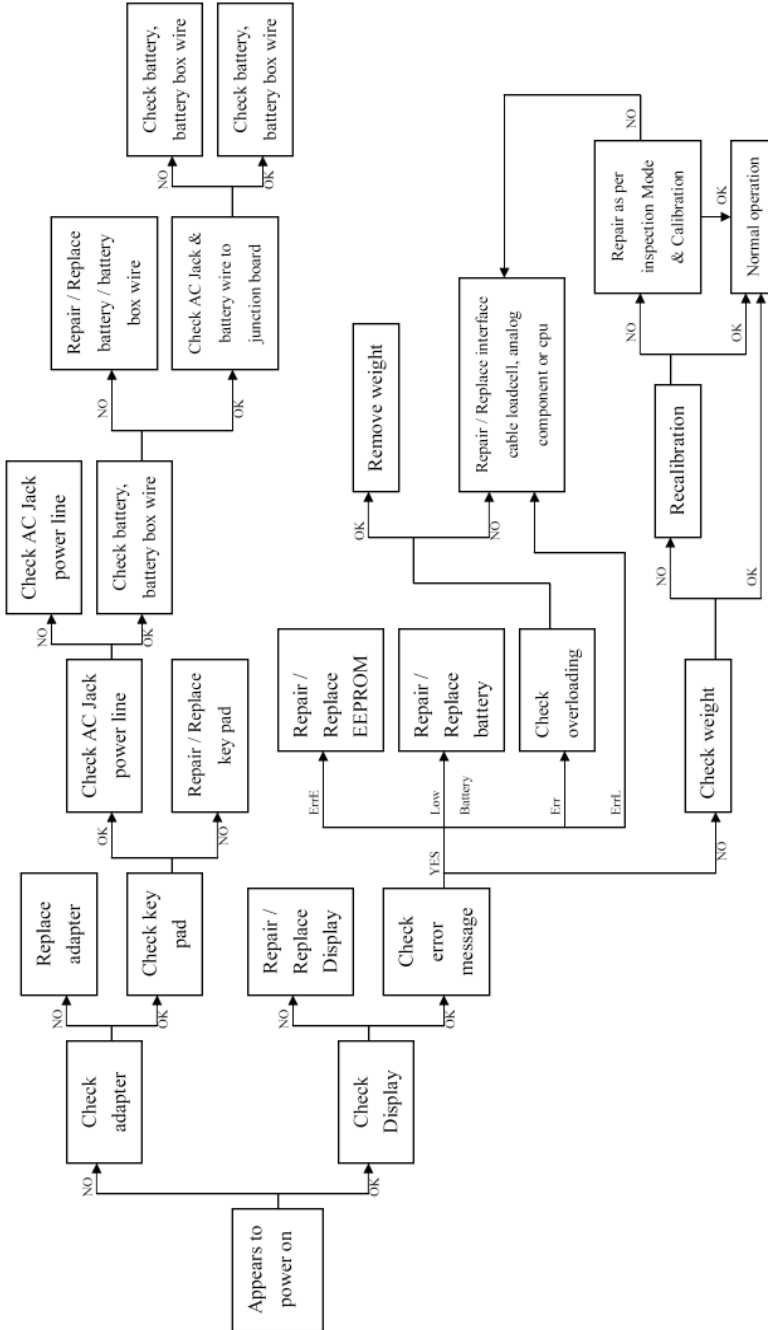
	1	2	3	4	5	6	7	8	9	10	11	12	13	14	15	16	17	18	19	20	21	22
COM1	☐	☐	s4	2a	kg	s5	3a	lb	s6	4a	s7	oz	5a	s8	6a	g	7a	/	C1	/	/	/
COM2	s1	☐	X	2f	2b	co12	3f	3b	co13	4f	4b	co14	5f	5b	6f	6b	7f	7b	/	C2	/	/
COM3	s2	☐	Y	2g	2c	p2	3g	3c	p3	4g	4c	p4	5g	5c	6g	6c	7g	7c	/	/	C3	/
COM4	s3	☐	Z	2e	2d	/	3e	3d	/	4e	4d	p5	5e	5d	6e	6d	7e	7d	/	/	/	C4

PART LISTS & ASSEMBLY DRAWING




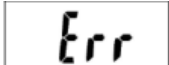

No.	Item	Spec.	QTY
1	SS Platform	TO-8085	1
2	Screw	M4*15	19
3	Plastic Platform	TO-8086	1
4	Waterproof Cap	ST-8289	1
5	Washer Screw	M5*0.8*15	1
6	SS screw	M3*0.5*6	11
7	Plastic fixture	ST-8303	1
8	Fixed. ring (A)	ST-8306	1
9	Corrugated Sheet	ST-8310	1
10	Fixwd (B)	ST-8307	1
11	SS Platform	CR-8180	1
12	Overlay	NP-8401	1
13	Lens	LS-8066	1
14	Control Panel	NP-8748	1
15	Plastic Cover	CR-8184	1
16	Waterproof breathable fabric	Ø25*18mm.IP67	4
17	PCB	ZLC04697KG	1
18	Screw	M4*12	4
19	LOAD CELL	L6D-C2-20kg	1
20	Wire Clip	CC-4	1
21	Buffer Plate	ST-8313	1
22	Waterproof ring	ST-8311	1
23	Washer head screw	3x5	3
24	Wire	AD-016E	1
25	Rubber Cap	ST-8314	1
26	AC Jack	LD-0219-2.0Φ	1
27	Plastic Base	BM-8109	1
28	Rubber Feet	SW-0170	2
29	Label	GM-9304B	1
30	Rubber Feet	SW-0330	4
31	Battery cover fixed	ST-8305	2
32	Battery Clips	BT-021A	1
33	Battery Clips	BT-021C	1
34	Battery Clips	BT-021B	1
35	Plastic Screw	GPE4-8	2
36	Battery Clips	BT-021D	2
37	Ring for Battery cover	ST-8312	1
38	Washer	KWS-3.6	2
39	Battery cover	BT-8080	1

TROUBLE SHOOTING



Trouble Shooting

ERROR MESSAGE

ERROR MESSAGE	REASON	ACTION
	<p>Low battery: This warning shows that the voltage of batteries is too low to use.</p>	<p>Please replace with new batteries or plug the AC adaptor for operation.</p>
	<p>Overload: The total load exceeds the maximum capacity of the scale.</p> <p>Counting error (too high): Indicates that the signal from the load cells is too high.</p>	<p>Please reduce the loading and try again.</p> <p>This error is normally caused by a serious fault on the scales i.e. a faulty load cell or wiring. Please contact the local Service Representative.</p>
	<p>Counting error (too low): Indicates that the signal from the load cells is too low.</p>	<p>This error is normally caused by a serious fault on the scales such as a faulty load cell or wiring. Please contact the local Service Representative.</p>